

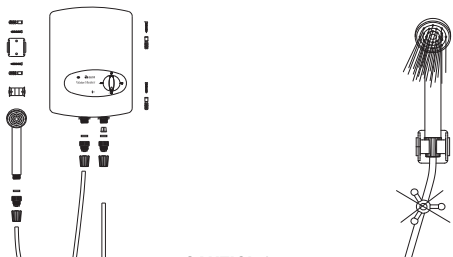
## MAINTENANCE

1. The maintenance of the appliance must be performed by an authorized service personal only.
2. Before any maintenance or service turn off the main power of the house. Make sure that the is power off by checking with a voltmeter.
3. If the water has too much lime, a water purificating system is recommended to purify water from lime. The failures caused by lime scale deposits is not under warranty.
4. For open outlet water heaters used with spray head and spray head must be descaled regularly.
5. Clean front casing with a cloth using detergent.(do not use gasoline, solvent, thinner , etc. for cleaning casing)

## INSTALLATION

### MOUNTING OF DEVICE FOR OPEN OUTLET (MODEL 105A5S1T.)

Mounting of Device to Shower and Parts to be used



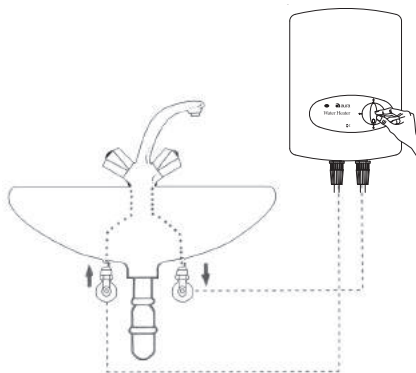
#### CAUTION !

The water outlet must not be connected to any tap/valve or fitting other than those specified.

### MOUNTING OF DEVICE FOR CLOSED OUTLET (MODEL 105A5S1TC)

#### Mounting of Device to Main Pipe Line

- \* Water inlet and outlet of the device is R 1/2".
- \* Connect the blue colour cold water inlet pipe to cold water pipe line with a flexible hose.
- \* Connect the red colour hot water outlet pipe to hot water pipe line with a flexible hose.

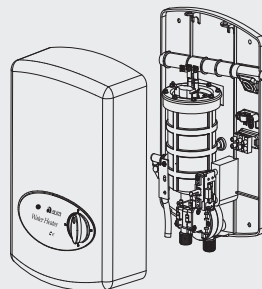


#### WARNING:

All poles shall be disconnection with contact opening at least 3.5 mm means for disconnection must be incorporated in the fixed wiring should be in accordance with the national wiring rules. The appliance must be connected to water supply should be according the national installation rules.

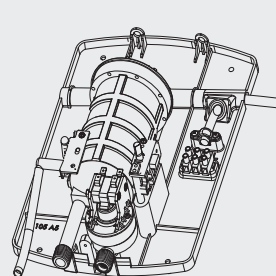
## MOUNTING PLAN ON THE WALL

FIGURE 1



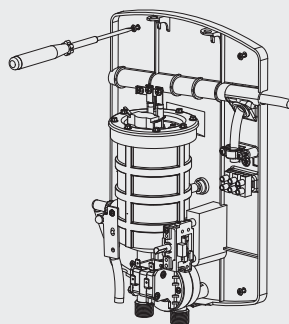
Remove the front cover in order to be able to mount the product to the wall and to make the wire connections.

FIGURE 2



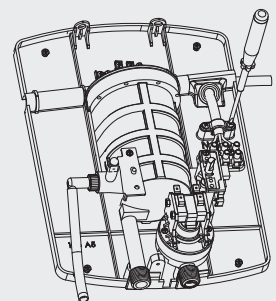
Strip ends of the insulated cable, make a hole in the water leakproof gasket, pass the wire through the back cover.

FIGURE 3



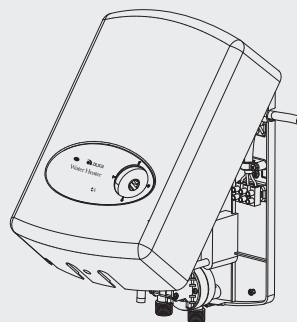
Fix the back cover to the wall with 4 dowelled screws.

FIGURE 4



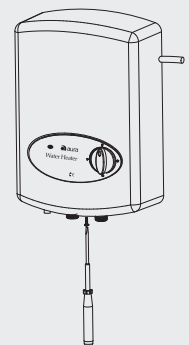
After fixing the cable with clamps, attach the cable end to clip and screw it.

FIGURE 5



Mount the front cover after fixing back cover to the wall

FIGURE 6



Mount the power level switch to the front cover and screw it.



# Instant Water Heater



## USER MANUAL



MODEL  
105 A5 SIT.  
105 A5 SITC

## Congratulations for having Aura Instant Water Heater !

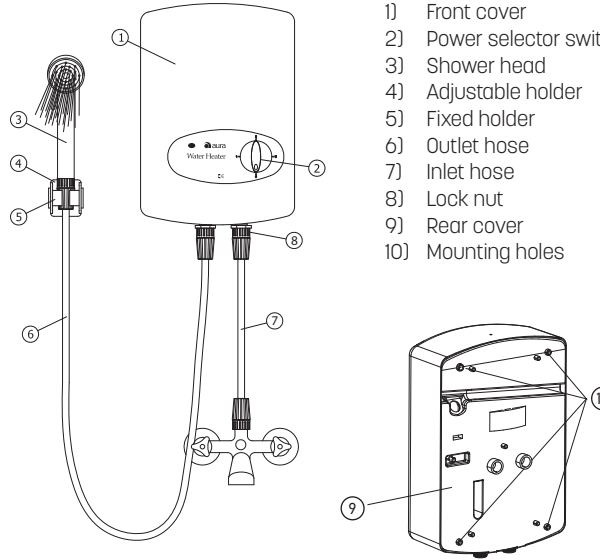
You have had very reliable and advanced instant water heater. Please read these instructions carefully before installation. Otherwise it may cause severe damages or serious injuries!

This user manual is available for two each model.

## TECHNICAL SPECIFICATIONS

Rated Voltage	: 230 V AC
Frequency	: 50 - 60 Hz
Rated Power	: 7 kW
Inlet controlled pressure	: 0 Pa (model 105A5SIT)
Outlet controlled pressure	: 600 kPa (model 105A5SITC)
Min.Operating Pressure	: 25 kPa (2.5 mSS)
Max.Operating Pressure	: 600 kPa (6mSS)
Flow Rate	: 100 - 240 L/hour
Size (H, W, D)	: 330x230x110 mm
Net Weight	: 2 kg
Protection Class	: I
Protection against moisture:	IP34

## INTRODUCTION OF WATER HEATER



- 1) Front cover
- 2) Power selector switch
- 3) Shower head
- 4) Adjustable holder
- 5) Fixed holder
- 6) Outlet hose
- 7) Inlet hose
- 8) Lock nut
- 9) Rear cover
- 10) Mounting holes

### IMPORTANT WARNINGS

- 1- This appliance must be grounded.
- 2- Disconnect this appliance from the electrical supply before cleaning, servicing or removing the cover.
- 3- Warning! Do not install the heater in a location where it may be subjected to freezing.
- 4- Warning! Do not switch the heater on if you suspect that the water is frozen. Wait until you are sure it is completely unfrozen.
- 5- All water line elements (fittings, hoses) must be suitable for minimum of 6 bar pressure.
- 6- This appliance must be connected to the main line with minimum of 32 A circuit breaker.
- 7- Use a pressure regulator if the inlet water pressure is higher than 6 bar.
- 8- Do not use other electrical devices with the power more than 1kW, while your water heater is operating.
- 9- This appliance is not intended for use by person (including children) with reduced physical, sensory or mental capabilities or lack of experience and knowledge, unless they have been given person responsible for their safety
- 10- Children should be supervised to ensure that they do not play with the appliance.
- 11- The instruction for appliances connected to the water mains by detachable hose-sets shall state that the new hose-set supplied with the sets should not be reused.
- 12- For an appliance intended to be permanently connected to the water mains and not connected by a hose-set.
- 13- Installation and repair of the appliance should only be performed by Authorized Services. Otherwise, your appliance shall not be covered by warranty.

**CAUTION!** In order to prevent danger caused by the thermal cutter accidentally starting, the appliance should not be fed through an outer switchgear like a timer or connected to a circuit which is opened and closed regularly with the help of a program.

## GENERAL FEATURES

### POWER SELECTOR SWITCH

Controls the power as 3 different level (3,4,7 kW) to adjust the water temperature.

### INDICATION LAMPS

The lamp at the top indicates the power.

### DIAPHRAGM GROUP

This sophisticated group (specially designed) controls the power depending on the differential pressure on both sides of rubber membrane. It shuts of the power when the differential pressure is not enough.

### THERMOSTAT

Prevents the over heating of the water by shutting off the heating element.

### HOW TO OPERATE

1. Turn on the water tap (Figure 1).
2. Adjust the flow rate by using the spherical valve (Figure 2).
3. Depending on the season and water temperature desired, the selector switch should be positioned to the desired level of 1,2 or 3.
4. To turn off your water heater, the power selector switch should be at "0" position first. Wait until water cools down.
5. When water cools down, close the water tap.
6. This shut off process will protect the heater resistance against lime scale deposits resulting decrease on heating and resistance failure.

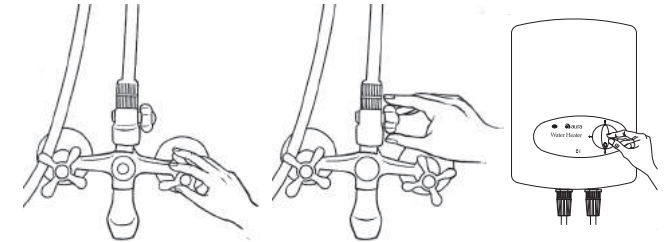


Figure 1

Figure 2

Figure 3